

The animal kingdom



The animal kingdom is divided into two main groups:

VERTEBRATES



Vertebrates are animals that have a backbone.

INVERTEBRATES



Invertebrates are animals without a backbone.

Some **VERTEBRATES** are

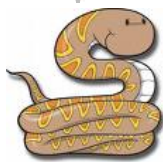
Mammals



Birds



Reptiles



Amphibians



Fish



Some **INVERTEBRATES** are

Molluscs



Worms



Insects



Coelenterates



Science quiz

1. Invertebrates do not have a backbone. T/F
2. People are vertebrates. T/F
3. People are amphibians. T/F
4. Fish are vertebrates that live in water. T/F
5. Snakes are birds. T/F
6. Amphibians are born in the water. T/F
7. Butterflies are vertebrates. T/F

Put the vertebrates in the correct place

MAMMAL

BIRD

REPTILE

AMPHIBIAN

FISH

